

SOFITEL
LEGEND



Where *Legends* live



In order to fully
appreciate a country,
you have to savour it,
eat it, drink it,
hear it singing.

Michel Déon
French author
1919 - 2016

Legendary Souvenirs *of History*

If only the walls could talk... They would surely have extra-ordinary tales to tell; of 16th century Princes and Queens on diplomatic missions and 17th century admirals commanding launches for distant lands. Not to mention stories of eager artists and craftsmen, pursuing a vision as they decorated The Grand. The majestic Sofitel Legend The Grand Amsterdam, overflowing with history but vibrantly modern. Offering a supreme hotel experience for guests from oceans away, or from just across the canal.



Amsterdam

Only a few minutes away from The Grand, there is a great range of sightseeing possibilities. Dam Square, a frequent stage for historical drama, is now the city's favorite meeting place.

Nearby you can find, amongst others, the magnificent Royal Palace, the 15th century Nieuwe Kerk (New Church), the picturesque shopping area the 'Negen Straatjes' (Nine Streets) and De Bijenkorf, Amsterdam's cutting edge department store.

Within a few more minutes many other wonderful places worth a visit can be found, such as the floating flower market with its brilliant colors and intoxicating scents, the memorable Anne Frank House and the famous antique area "Het Spiegelkwartier".

Also situated close to the hotel is the Fashion & Museum District, where you can visit world-famous museums such as the Rijksmuseum, the Van Gogh museum and the Stedelijk Museum. Also the Concertgebouw, the House of Bols Cocktail & Genever Experience and Amsterdam's most exclusive shopping street, the P.C. Hoofstraat, are located in this area.

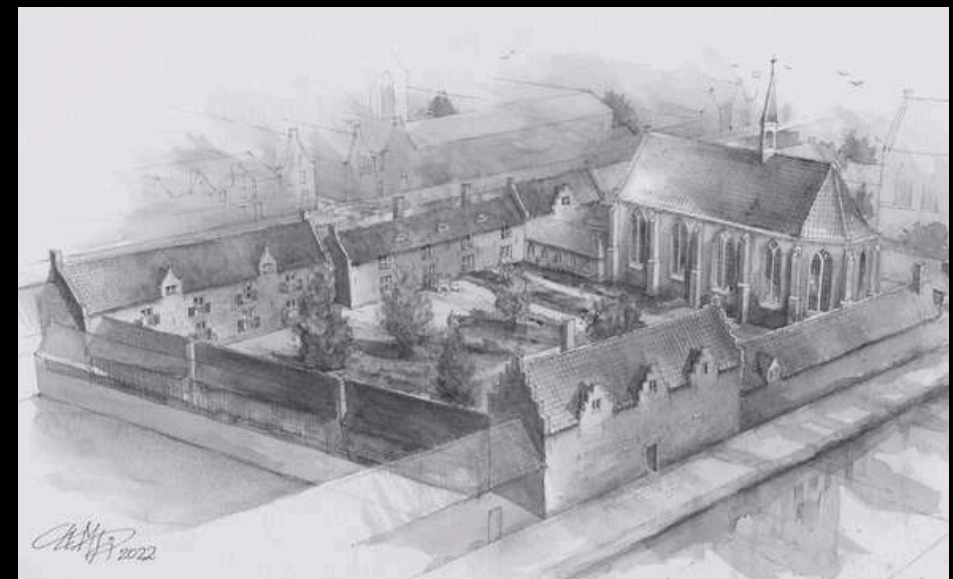




Live the *Legend*

Located between two of the oldest canals in the heart of the city, The Grand boasts a rich history; from a 15th century convent to royal lodgings, to the headquarters of the Admiralty to the City Hall of Amsterdam.

The former City Hall's 'new wing' is viewed as one of the finest examples of Amsterdam School architecture. It is designed by architect N. Lansdorp (1885–1968) with gable sculptures by Hildo Krop (1884–1970). In 2010, the 17th century canal ring area was placed on the UNESCO World Heritage list. The Oudezijds Voorburgwal is the perfect place to start a stroll to discover the rich history surrounding the hotel.



First steps into *the Lobby*

Behind the imposing Dutch neoclassical façade lays a magical universe, with radiating elegance, generosity and spirit. Once frequented by legendary people, The Grand entrance hall is a monument to light and depth.

Porcelain butterflies glimmer overhead in a jewel-toned ceiling lamp created by French designer Sybille de Margerie. Plush upholstery, veined marble, dark wood and stunning flowers give the lobby an extraordinary feeling; it is an invitation to guests to indulge



The Cosy *Library 'Or'*

The Library 'Or' is located in the beautiful lobby of The Grand, directly at the entrance of the hotel. The Library 'Or' has a rich collection of books about local culture, architecture and French "savoir-faire". This library, graced by a beautiful, eye-catching lamp with precious gold leaf inlay, is the ideal place to become acquainted with art and culture or to relax in peaceful surroundings.



The Library 'Or' was designed by interior designer Sybille de Margerie, who drew inspiration from the colors of typically Dutch elements, such as the dark-grey street stones known as 'klinkers' and the deep, rich colors of the Amsterdam flower market. Dotted around the library are comfortable sofas and deep armchairs, where one can relax or partake to The Grand Afternoon Tea.





Culinary Experience at *Bridges*

Experience exceptional gastronomic quality in the accessible atmosphere of restaurant Bridges and enjoy the exquisite cuisine, inviting service and conviviality of team Bridges in the heart of Amsterdam.

Executive Chef Raoul Meuwese describes his dishes as “classic and traditional French, with international influences and a local touch.” He prefers to work with fish and local products which are sustainability grown or caught and based on these products he creates dishes according to the season.

Discover the flavors of Bridges with a five, six or seven course Menu du Chef and experience Bridges the way we envision it or create your own menu with our à la carte options. Our Wine Director, Joshua Mullock, brings a thoughtful approach to wine selection, curating a balance of both extraordinary and accessible wines to enhance every dining experience.

A unique feature of Bridges is the Chef's Table in the heart of the kitchen, where you can experience the magic of the kitchen brigade up close (max. 6 people).



Mediterranean Flavours *at Oriole*

—

Oriole Garden Bistro breaths the feeling of a Mediterranean garden, with its lush greenery that brings the beautiful outside garden indoors. The bright golden Oriole bird invites everyone to feel free and enjoy the very best of the Mediterranean. Discover the pure flavors of the seasonal menu, prepared by our passionate Chefs and served with a smile.



With its inviting vibe, Oriole is the perfect place to enjoy a light lunch, cosy dinner with family and friends or the Mediterranean tradition Aperitivo. Combine the pure dishes with Oriole style cocktails that will take you to the Mediterranean in the heart of Amsterdam. Made with fresh ingredients grown on our rooftop garden, our talented bartenders are ready to shake!



Peaceful *Garden Terrace*

The Garden Terrace can be found in the beautiful inner garden of The Grand. It is one of Amsterdam's best kept secrets; an oasis of peace and tranquility, situated in the heart of the city. The location lends itself perfectly for a relaxing drink, a good cup of coffee, a business lunch or an intimate dinner.



The terrace is surrounded by historical walls and has a view on the balcony of the Marriage Chamber. The garden has retained many of its authentic Amsterdam School style features, from the time that The Grand served as the city hall of Amsterdam. A good example is the sculpture created by Amsterdam-based artist Jacob Kaas, dating from 1931.



Classic Rooms

Approximate surface:
25 m2 / 269 ft2

The rich history of The Grand is incorporated into the interior design of the rooms in many ways. The legendary people who visited the building is the past, now decorate the walls of the various rooms and suites.

The Classic rooms overlook the peaceful inner garden terrace. The rooms are equipped with a Sofitel MyBed, a working desk, Nespresso machine and a safe deposit box. The Classic rooms have a comfortable bathroom with walk-in rain-shower and provided with luxury toiletries.



Superior Rooms

Approximate surface:
30 m2 / 323 ft2

The high ceilings and big windows in the Superior rooms bring you closer to the rich history of the building; many of the rooms also still display the traditional brickwork. The luxury and contemporary design blends in perfectly with the modern art and digital gadgets available in the room.

The rooms measure at least 30 m2 and feature a double or twin Sofitel MyBed, air-conditioning, Nespresso machine, luxury toiletries, a large walk in rain-shower and free access to the internet. The Superior rooms offer a wonderful view, overlooking the garden, street or courtyard.



Luxury Rooms

Approximate surface:
35 m2 / 377 ft2

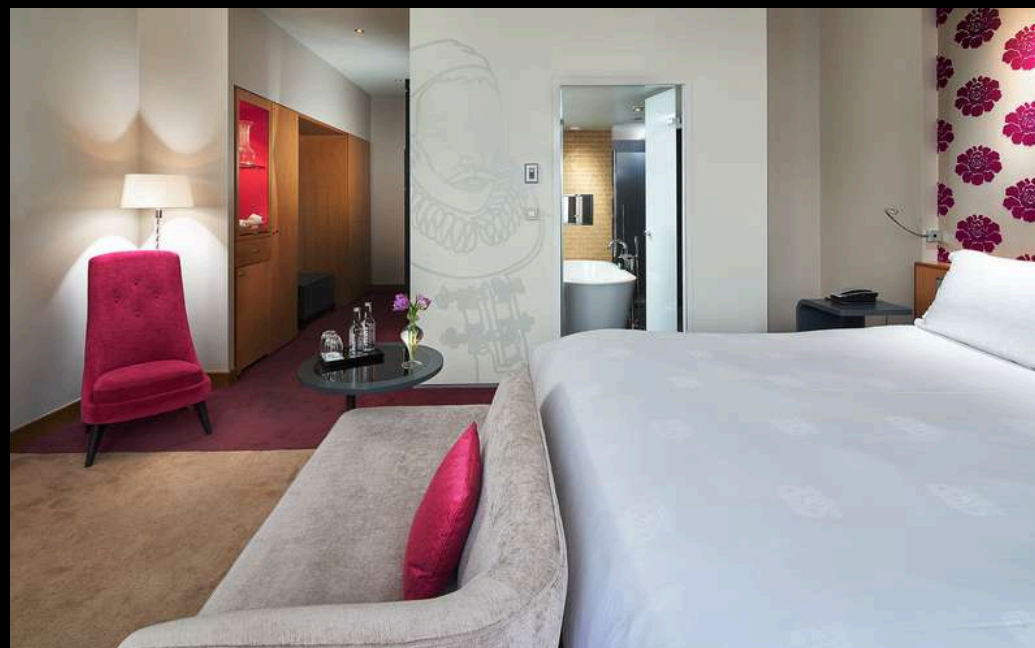
French designer Sybille de Margerie celebrated the timeless grandeur of sumptuous textiles, combining them with subtly sophisticated furnishings and superlative modern comfort, such as a Sofitel MyBed, a walk-in rain-shower, a bath with tv-screen, luxury toiletries and high-tech media equipment. On the bedroom walls, a tribute to the royal guests from the past is portrayed



Junior Suites

Approximate surface:
45 m2 / 484 ft2

Contemporary design, warmed by bare brick, deep mahogany and plush textiles characterise the interior of the Junior Suites. The living room of the Junior Suites is decorated in velvety shades of aqua, plum or sienna. The spacious bedroom features a king-size Sofitel MyBed and a comfortable sitting area and connects to a generous bathroom with walk-in shower, stylish bath and luxury toiletries.





Expertise and Etiquette

Butler Service

Luxury is not merely a case of material comfort, it also encompasses the human factor; 'savoir-faire' and 'savoir-être' (expertise and etiquette). Men and women who are truly passionate about their profession, ambassadors who bring the hotel to life. They bring a ray of sunshine to everyday life and place their considerable talents at the service of our guests.

The Grand offers free Butler Service to guests staying in one of the 30 spacious suites. This exclusive service offers special benefits, such as personalized rooming, (un) packing of suitcases and presenting 'pillow menu's' and 'bath rituals'. The Butler provides a unique and direct line between the guest and the hotel services offered, such as rentals of cars and limousines, bicycles and chariots, laundry service and shoe polishing, reservations in restaurants and clubs, excursions and tours, and anything else to make the stay at The Grand the most comfortable and memorable as possible.

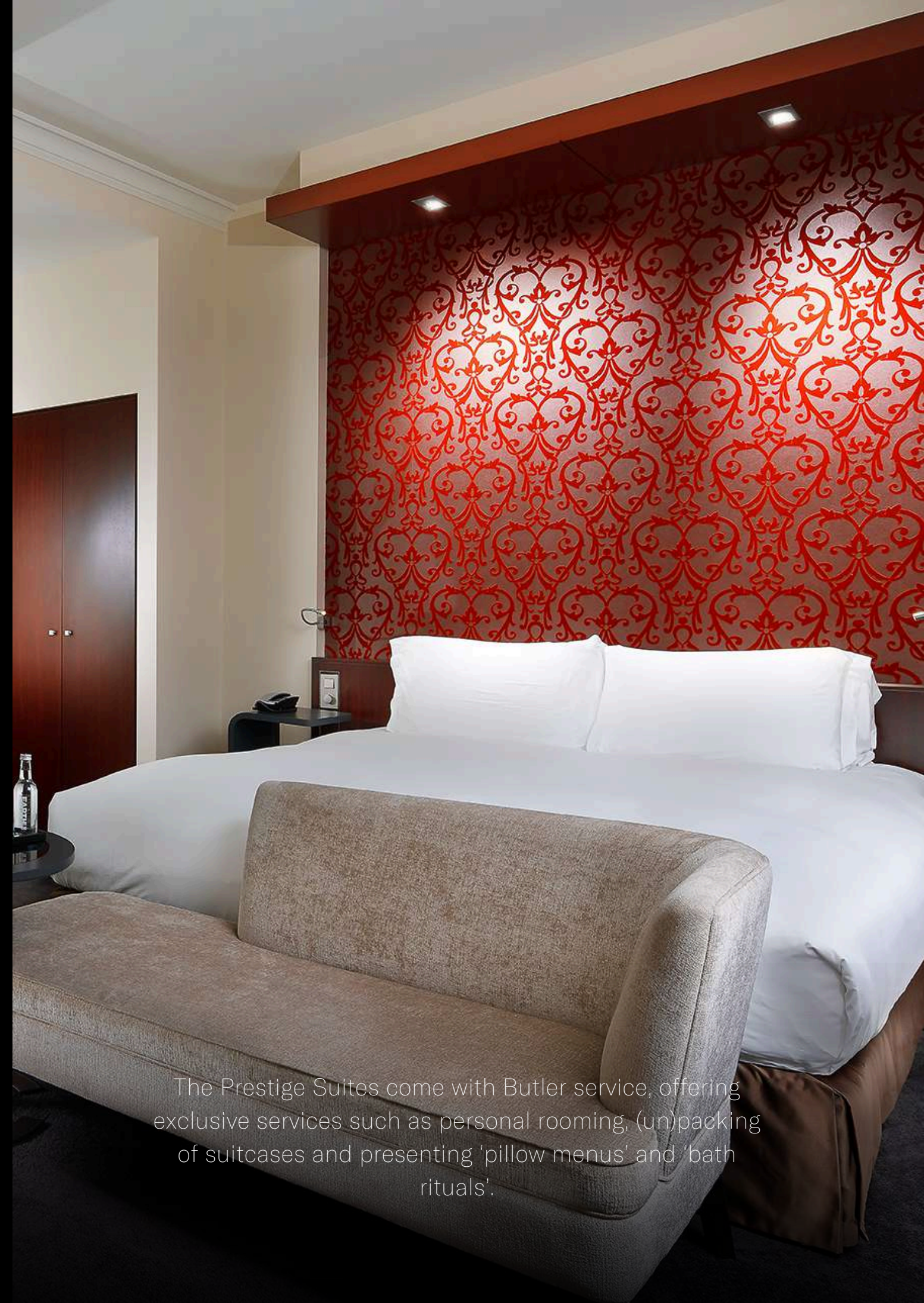


Prestige Suites

Approximate surface:
55 m2 / 592 ft2

Indulge in pure luxury and enjoy the comfort of one of the iconic Prestige Suites, overlooking the picturesque Amsterdam canals.

The wonderful custom-made furniture and artworks in the suites were all carefully selected by interior architect Sybille de Margerie, to enhance the petrol color scheme that weaves throughout the suites.



The Prestige Suites come with Butler service, offering exclusive services such as personal rooming, (un)packing of suitcases and presenting 'pillow menus' and 'bath rituals'.

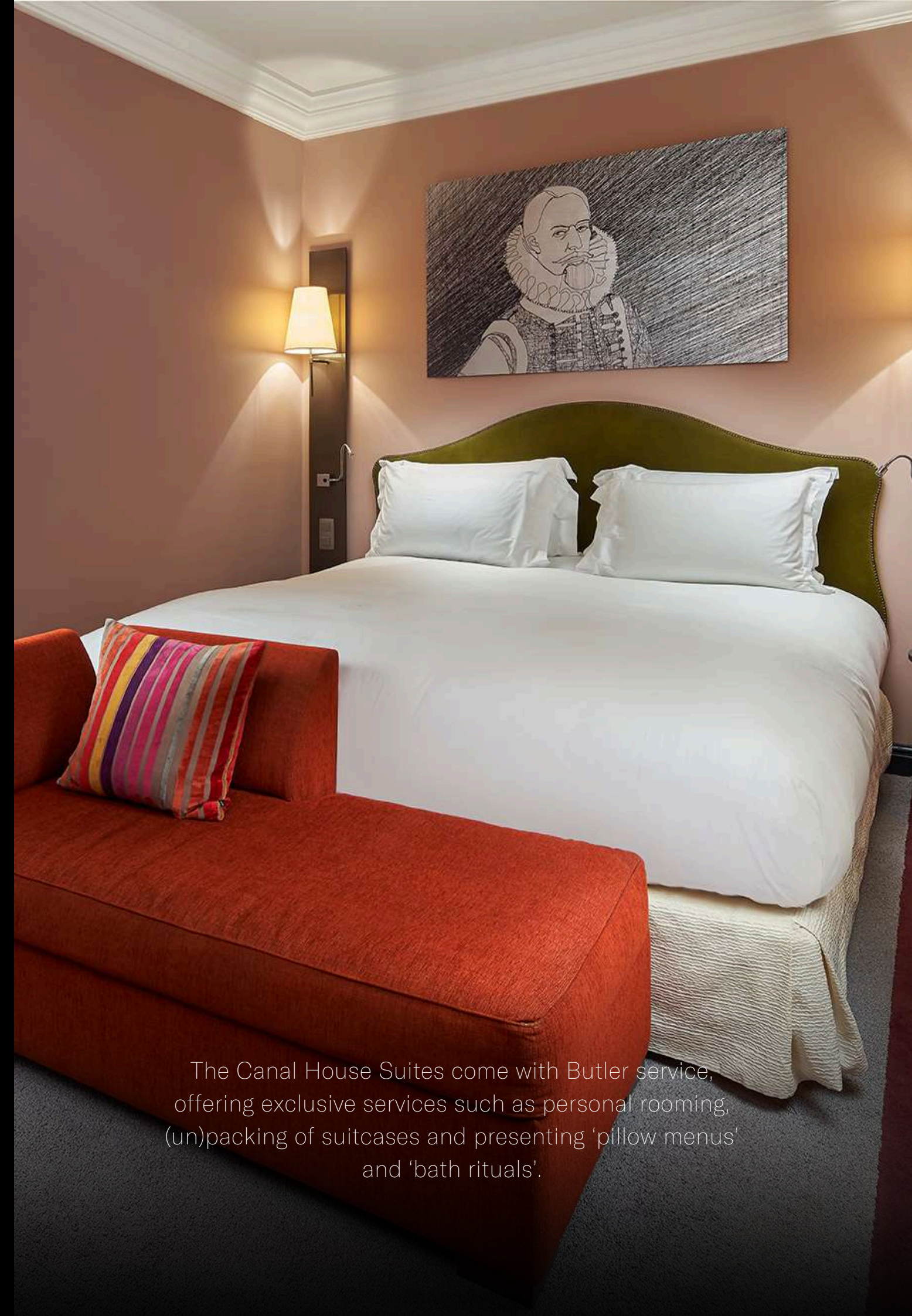


Canal House Suites

Approximate surface:
65 m2 / 700 ft2

Twelve Canal House Suites are situated in the former homes of famous Dutch admirals, such as Michiel de Ruyter. In these suites you go back to a metropolitan history, dating back to the 17th century.

The Canal House Suites are characterised by timeless elegance of cream-colored walls, wooden ceiling beams, warm autumn colors and a subtle mix of classic and modern furniture. Various Canal House Suites feature a fully-equipped kitchenette, while several other apartments have a private roof terrace or a 'split level' layout. Three Canal House Suites offer a private entrance directly on the historic canal side.



The Canal House Suites come with Butler service, offering exclusive services such as personal rooming, (un)packing of suitcases and presenting 'pillow menus' and 'bath rituals'.



Opera Suites

Approximate surface:
75 m2 / 807 ft2

The six lavish Opera Suites offer you the ultimate luxury. The suites are decorated in shades of jade, aqua and ecru, integrating both the classical French elegance and the modern Dutch design. All Opera Suites have bathrooms with double sinks, a rain shower and a separate bathtub with an integrated flat-screen television situated above it.

Three Opera Suites are located in the main building of The Grand, overlooking the charming and peaceful inner garden. The other three Opera Suites (duplex) are situated in former canal houses and offer two floors of pure luxury and plenty of privacy. These duplex Opera Suites consist of a lovely modern living room on the ground floor with high ceilings, large windows and some of them even have an authentic fireplace to set the ambiance. The second floor accommodates the master bedroom with annex bathroom.



The Opera Suites come with Butler service, offering exclusive services such as personal rooming, (un)packing of suitcases and presenting 'pillow menus' and 'bath rituals'.

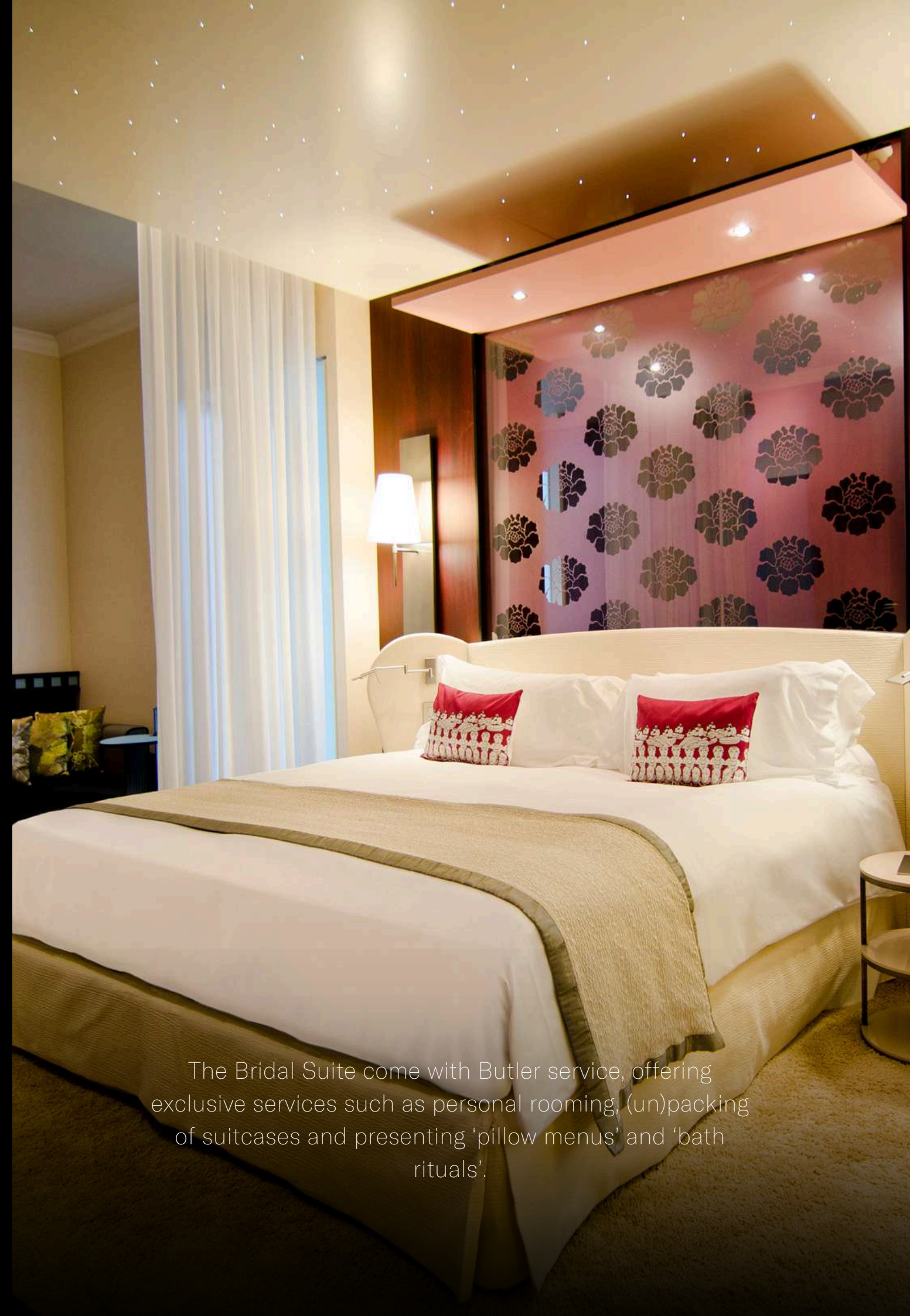


Bridal Suite

Approximate surface:
75 m² / 807 ft²

Step into a world of romance and luxury in the Bridal Suite, an intimate haven nestled on the fourth floor with breathtaking views of the peaceful garden terrace. This spacious 75 m² suite exudes timeless French elegance, offering a king-size Sofitel MyBed™ for ultimate comfort, a separate living area with a cozy sitting nook, and a beautifully designed bathroom with a bathtub and walk-in rain shower.

Relax and unwind in the Hammam, or let your personal butler prepare a scented bath to set the perfect atmosphere. Whether you're celebrating a honeymoon, anniversary, or simply indulging in a romantic getaway, the Bridal Suite offers the perfect setting. With thoughtful amenities like a fully stocked minibar, access to the Sofitel SPA, and attentive butler service, every detail is taken care of to ensure your stay is nothing short of extraordinary.



The Bridal Suite come with Butler service, offering exclusive services such as personal rooming, (un)packing of suitcases and presenting 'pillow menus' and 'bath rituals'.



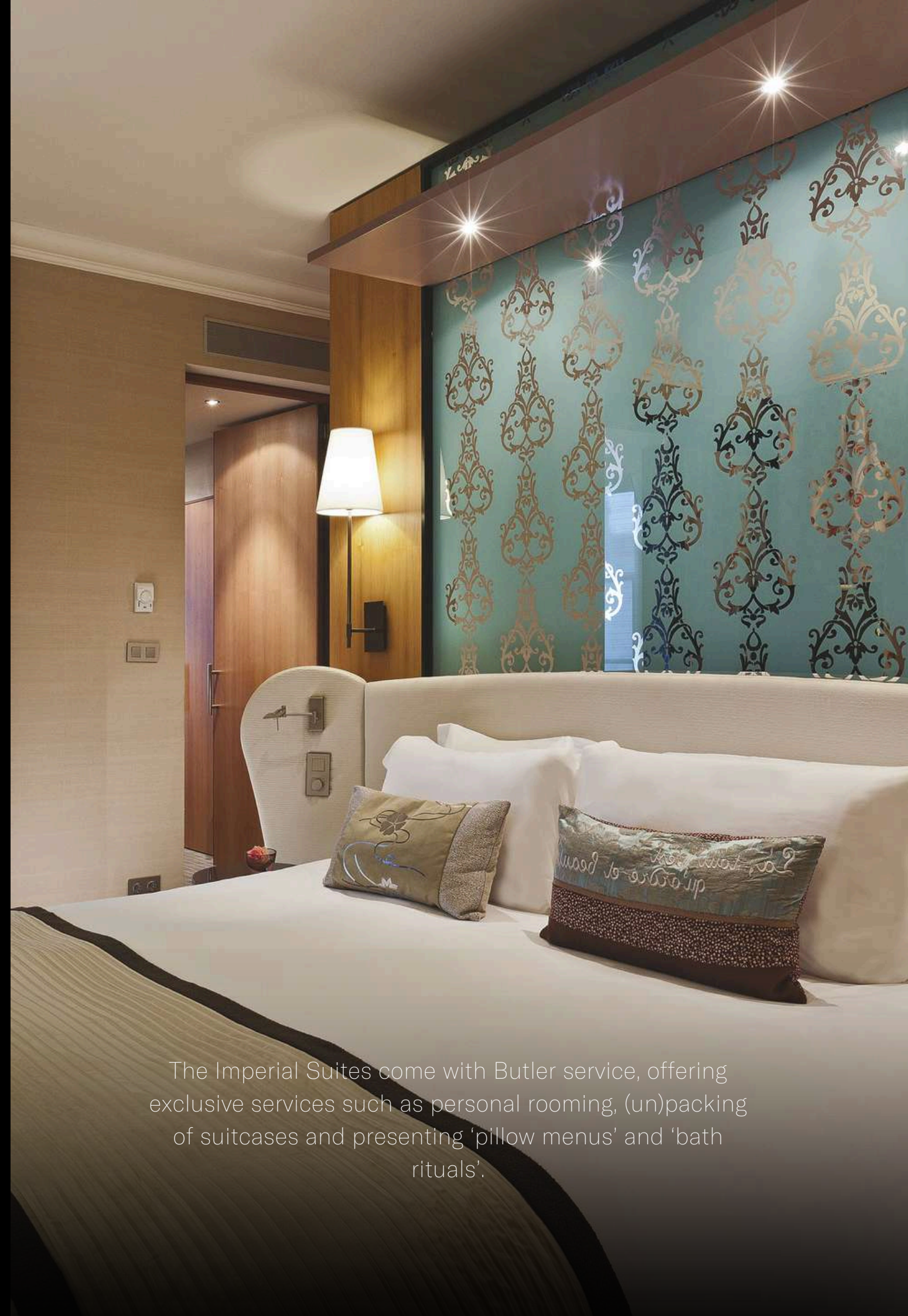
Imperial Suites

Approximate surface:
100 m2 / 1076 ft2

For the design of the Imperial Suites, Sybille de Margerie drew inspiration from the legendary people who stayed at The Grand, resulting in the William of Orange Suite, the William V Suite and the Maria de Medici Suite. The suites show a harmonious blend of traditional and contemporary design, with typically Dutch style elements. They are decorated with works of art that evoke memories of the legendary people that have visited The Grand.

The Imperial Suites have a spacious sitting area with dining table and 65-inch flat screen television. The large bedroom features a walk-in closet and a generous bathroom equipped with a powerful rain shower, a freestanding bathtub and a very own hammam (steam bath).

The Imperial Suites can be interconnected with a Superior room, ideal for presidential couples and anyone travelling with a large entourage. Of course the unique Butler service is included.



The Imperial Suites come with Butler service, offering exclusive services such as personal rooming, (un)packing of suitcases and presenting 'pillow menus' and 'bath rituals'.



Royal Suite

Approximate surface:
100 m2 / 1076 ft2

The most prestigious suite of The Grand is the Royal Suite, located on the third floor of a former canal house and overlooking the hotel's authentic courtyard. This most prestigious guest room will make you feel like the royals and admirals who have graced our building over the years. Contemporary design combined with monumental wood beamed ceilings create a real home away from home atmosphere.

The Royal Suite features a magnificent king-size bedroom and a spacious living room with lounge and dining area adjacent to a small library with working desk. The luxurious bathroom includes a walk in rain-shower and a freestanding bathtub. Additionally, the suite also features an upstairs private balcony.



The Royal Suites come with Butler service, offering exclusive services such as personal rooming, (un)packing of suitcases and presenting 'pillow menus' and 'bath rituals'.





Sofitel SPA & *Sofitel FITNESS*

The Sofitel SPA is a real escape from the hustle and bustle of the city. Therapies and treatments from around the world meet the refinement and skills of the latest trends in French cosmetology to create an exhilarating, uplifting and rejuvenating spa experience. A visit to Sofitel SPA awakens the senses whilst completely re-energizing the mind, body and spirit. A wide range of relaxing treatments make all the stress and strains of daily life fade away, with products chosen to enhance the natural glow. Designed over two floors, Sofitel SPA offers a range of services including two treatment rooms, a hammam, sauna, heated indoor swimming pool and relaxation room.

Directly accessible from the Sofitel SPA is the Sofitel FITNESS area, for the exclusive use of club members and hotel guests. The Sofitel FITNESS offers the most advanced fitness equipment from Technogym that features cutting edge technology and design. A personal trainer is available upon request.





Majestic Setting

Council Chamber

The Council Chamber was built in 1924 as the 'new' headquarters for Amsterdam's city council. It is listed as a historical monument and is truly imposing; not only because of its size, but also because of the rich history of the 'Gesamtkunstwerk' architecture. Designer Willem Penaat (1875-1957) saw the Council Chamber as 'one joint work of art', with all its parts based upon one and the same idea and directed by one person, to form a whole. From the tapestry via the mural carpentry to the ceiling, with the parapets and chandeliers, to the furniture and the raised platform with the table for the Mayor and Aldermen; each component, down to the very last door knob, bore witness to one dominant spirit of times.

The majestic setting where Amsterdam mayors and governors have spoken and where the former Queen, Princess Beatrix married Claus von Amsberg on March 10th, 1966, make the Council Chamber a magical room for legendary events.





The First Class *Marriage Chamber*

Step into an Art Deco masterpiece of love and marriage, created in 1926 by Dutch artist Chris Lebeau (1878-1945). The murals were Lebeau's first and he was using a new kind of paint: Keimian mineral paint. "I have found wonderful paint; it adheres to the surface of the wall and no matter how rough the cement might be, we can venture to paint the finest little details," he wrote.

In the Marriage Chamber, Lebeau depicts the story of love between two people, with as highlight the marriage of the couple on the stained glass. In ruby, emerald and amethyst, the beautiful windows portray the courtship and wedding of an elegant bride and groom. Bold, yet delicate frescos in turquoise swirls and gold accents cover walls and ceilings, surrounding you with a magnificent tale.



Legendary Meetings *Princenhof*

The Princenhof, once functioning as accommodation for, amongst others, Prince William of Orange and the French Queen Maria de Medici, holds fourteen contemporary meeting rooms, including a state-of-the-art executive board room and a special catering room.

All the conference rooms are styled as Meetings rooms, the conference concept of Sofitel Luxury Hotels worldwide.

Meetings is a total conferencing concept, that combines historic settings with state-of-the-art technology.

Meetings enables guests to personalize each meeting and is designed to make each business meeting as enjoyable and efficient as possible.





Legendary *Services*

At Sofitel Legend The Grand Amsterdam, highly personalized service is the guiding philosophy. The exclusive Butler service is provided to guests staying in one of the 30 suites. The service offers special services, such as personalized rooming, (un)packing of suitcases and presenting of 'pillow menu's' and 'bath rituals'.

The 'Le Clefs d'Or' Concierge-team holds the keys to Amsterdam and is delighted to assist with booking tickets, making reservations and ensuring a carefree stay. Also, the Concierge will be happy to assist in arranging transportation; an airport limousine service is available for pickup. Valet parking is offered seven days a week.

Additionally, a historic tour of the hotel is offered daily by our Guest Relations officers, starting at 11 am in the hotel lobby.





The *Floral* Boutique

The Floral Boutique, located with their boutique on the ground floor of the hotel, have one goal: to exceed the expectations of the guests.

Flowers add beauty to any thoughtful occasion and grace to every special event. The Floral Boutique create floral arrangements, bouquets and special gift baskets, that can be ordered and delivered directly to the guest's room.

If you are looking for something that is distinctly unique, you can customize your own personalized gift basket for that special someone. Also for special events or ceremonies, the Floral Boutique can provide custom-made flower arrangements and adornments.

The boutique is open from Monday till Friday, from 9 a.m. until 5 p.m. Outside regular hours, the boutique is also open by appointment.





THE GRAND

AMSTERDAM • 1578



Sofitel Legend The Grand Amsterdam
Oudezijds Voorburgwal 197 - 1012 EX Amsterdam
T +31(0)20 555 3 111 - contact.thegrand@sofitel.com
www.sofitel-legend-thegrand.com

  @SofitelLegendTheGrandAmsterdam

SOFITEL
LEGEND

